



**ST. CLAIR CATHOLIC  
DISTRICT SCHOOL BOARD**  
*Lighting the Way ~ Rejoicing in Our Journey*

---

***ADDENDUM # 002***

---

**ST. CLAIR CATHOLIC DISTRICT SCHOOL BOARD  
ST. JOHN FISHER CATHOLIC SCHOOL**

**44 MAIN STREET, FOREST, ONTARIO**

**TENDER NO.: 632-CP1505**

RWAI Project No. 1505

Documents prepared by:

St. Clair Catholic District School Board

AND

Randy Wilson Architect Inc.  
Suite 1Q, 280 Queens Avenue  
London, Ontario N6B 1X3

Issue Date:  
Tuesday May 19, 2015

*This addendum forms part of the Contract Documents and amends the original drawings and specifications issued for Bid on April 14, 2015.*

## **TABLE OF CONTENTS**

ADDENDUM # 1 (Including cover)	3 Page(s)
Bid Form	4 Page(s)
Section 010800-Washroom Accessories	3 Page(s)
Sketch – SKT-001	1 Page(s)
Sketch – SKT-002	1 Page(s)
<b>TOTAL PAGE COUNT FOR THIS ADDENDUM</b>	<b>12 Page(s)</b>

## **PART A – GENERAL**

RESERVED

## **PART B – SPECIFICATIONS**

- **BID FORM**

Add:

- 2) **CASH ALLOWANCES**

2. Include Stipulated Sum of Three Thousand Dollars (\$3,000.00) to cover costs associated with Asbestos abatement work
3. Include Stipulated Sum of Three Thousand Dollars (\$1,500.00) to cover costs associated with Hardware

New BID FOR is attached

## **SECTION 010800 – WASHROOM ACCESSORIES**

New Section has been added as part of this addendum.

## **PART C – ARCHITECTURAL DRAWINGS**

RESERVED

## **PART D – STRUCTURAL DRAWINGS**

RESERVED

**PART E – MECHANICAL / ELECTRICAL DRAWINGS**

RESERVED

**PART F – CIVIL DRAWINGS**

RESERVED

**PART G – LANDSCAPE DRAWINGS**

RESERVED

**Architectural Sketches Included**

- Sketch SKT-001: Frame, Door, Frame Profile details
- Sketch SKT-002: Door Schedule

**END OF ADDENDUM # 002**

Submitted By: \_\_\_\_\_

To: **St. Clair Catholic District School Board**

**Project: No. 632-CP1505**

**Exterior and Interior Renovations**

**St John Fisher Catholic School  
44 Main Street  
Forest, Ontario**

**1) BID PRICE**

The Drawings, Specifications and other Contract Documents for this Project have been examined, as well as the premises and job site conditions affecting the work. The undersigned hereby offers to complete the work in accordance with the Contract Documents for the following bid price, except as defined below for HST:

\_\_\_\_\_  
\_\_\_\_\_ Dollars (\$ \_\_\_\_\_)

in Canadian funds EXCLUDING HST. HST will be added to the bid price.

In submitting this Bid, the undersigned recognizes and accepts the right of the Owner to accept any Bid, which is deemed the most advantageous to the Owner, (or any part thereof), at the price submitted, or to reject any or all Bids. Acceptance of the bid and/or award of the contract is subject to the approval of the **St. Clair Catholic District School Board**.

In the event that a discrepancy arises between the written bid price and the associated numerical price, the written bid price will be deemed to be correct.

Harmonized Sales Tax (HST)

The bidder shall not include the applicable HST in the bid price. The successful contractor will indicate on each application for payment as a separate amount the appropriate HST the Owner is obliged to pay.

**2) CASH ALLOWANCES**

1. Include Stipulated Sum of Three Thousand Dollars (\$3,000.00) to cover costs associated with re-location of the existing hardware at the South wall of the main entrance. Work to be done by JPW systems.
2. Include Stipulated Sum of Three Thousand Dollars (\$3,000.00) to cover costs associated with Asbestos abatement work

3. Include Stipulated Sum of Three Thousand Dollars (\$1,500.00) to cover costs associated with Hardware

**3) INSURANCE**

The undersigned carries Policy # \_\_\_\_\_ with \_\_\_\_\_ in the following amounts:

- 1. Comprehensive General Insurance . . . \$ \_\_\_\_\_
- 2. Automobile Liability Insurance. . . . \$ \_\_\_\_\_

Provide a signed standard form provided by the Contractor's insurance company or broker stated its intention to provide insurance to the Bidder in accordance with the insurance requirements of the Contract Documents.

**4) BONDING**

The undersigned has provided with this bid the required Bonding and Surety as outlined in the Instruction to Bidders, Paragraph 1.08.

**5) WORKPLACE SAFETY AND INSURANCE BOARD**

The Bid package is to include a current Certificate of Good Standing from the Workplace Safety and Insurance Board (WSIB).

**6) TIME OF COMPLETION**

The undersigned hereby affirms and states that, if awarded the Contract for said work, the entire contract will be completed within the time frames as stated in the Instructions to Bidders, Paragraph 1.11.

**7) SUMMARY**

The undersigned agrees that the bid price shall remain in effect for a period of 60 (sixty) calendar days from the date of receipt of bids. The undersigned agrees to assume all increases in labour rates and material prices, taxes, duties, cost indexes, or any other rates that may develop during the life of this Contract.

**8) DOCUMENTS AND INFORMATION**

This Bid is based on the following:

- 1. Bid Form
- 2. Instructions to Bidders
- 3. General Conditions
- 4. Drawings/Sketches
- 5. Specifications

**9) SCOPE OF WORK**

Interior Renovation: Demolish part of existing block partitions, concrete slab, floor finish, and doors as indicated in drawings. New Handicap washroom, handrails and floor finish

at stair and ramp. Provide plumbing services and electrical services as noted in the drawings. Install new flooring as indicated. Patch and repair all damaged walls and ceilings, paint rooms indicated in drawings and finish schedule. Install new LAT ceiling tiles and grid system in corridors as indicated in drawings.

Exterior Renovation: Site demolition, removal of tree, fixtures and appurtenances. New asphalt, paving, linework, and landscaping work as indicated on the drawings. Relocation of existing shed. New canopy and new front entrance finishes as indicated in drawings.

10) **ADDENDA**

The undersigned acknowledges receipt of Addenda Numbers \_\_\_\_\_ through \_\_\_\_\_ inclusive, and that the price, or adjustment thereof, for all work required therein is included in this proposal.

11) **SEPARATE PRICES**

It is accepted that the intent of separate prices is to allow the Owner to add work outlined below, at the Owner's discretion.

The following prices have not been included in the base bid amount. The following prices include labour, material, tools, equipment, overhead and profit, but exclude HST.

Separate Price # 1 **None at this time.**

\$ \_\_\_\_\_

12) **ALTERNATE PRICES**

It is accepted that the intent of alternate prices is to allow the Owner to select alternate scope of work and prices as outlined below, at the Owner's discretion.

The following prices have not been included in the base bid amount. The following prices include labour, material, tools, equipment, overhead and profit, but exclude HST.

Alternate Price # 1 – **None at this time.**

Extra \$ \_\_\_\_\_ Credit \$ \_\_\_\_\_

(Complete only the appropriate value change)

13) **IDENTIFIED PRICES**

It is accepted that the intent of identified prices is to allow the Owner to identify cost for specific scope of work outlined below.

The following prices have been included in the base bid amount. The following prices include labour, material, tools, equipment, overhead and profit, but exclude HST.

Identified Price # 1 **None at this time**

\$ \_\_\_\_\_

**14) LIST OF SUBCONTRACTORS**

The following is the list of subcontractors to which reference is made on the submitted Bid Form.

No changes to the List of Subcontractors will be allowed without the Consultant's express written permission.

List each subcontractor by his firm's proper legal designation, and indicate whether his business is carried on as an individual, partnership, or limited company.

The bidder submits that in proposing the listed subcontractors, he has consulted each and has ascertained to his complete satisfaction that those named are fully acquainted with the extent and nature of the work involved and of the proposed construction schedule, and that they will execute their work to conform to the requirements of the Contract Documents.

**List of Subcontractors**

Demolition \_\_\_\_\_

Millwork \_\_\_\_\_

Gypsum Wall Board and Acoustics \_\_\_\_\_

Flooring \_\_\_\_\_

Painting \_\_\_\_\_

**15) EXECUTION OF CONTRACT**

The Contract form will be a standard Canadian Construction Documents Committee (CCDC) #2 2008 - Stipulated Sum Contract.

SIGNATURE: \_\_\_\_\_

NAME PRINTED: \_\_\_\_\_

TITLE: \_\_\_\_\_

COMPANY: \_\_\_\_\_

ADDRESS: \_\_\_\_\_

\_\_\_\_\_

PHONE: \_\_\_\_\_

FAX: \_\_\_\_\_

DATE: \_\_\_\_\_

**END OF BID FORM**

---

**PART 1 - GENERAL**

**.1 Description**

**.1 General Requirements**

Division 1, General Requirements, is a part of this Section and shall apply as if repeated here.

**.2 Work performed by other Sections related to this Section is specified in:**

Section 08800: Mirrors  
Division 15: Plumbing fixtures  
Division 16: Service for electric dryers

**.2 Submittals**

**.1 Shop Drawings**

Submit shop drawings

**.2 Samples**

Submit samples of accessories that are requested.

**.3 Delivery, Storage and Handling**

- .1 Package accessories and label with description of contents and installation location.  
.2 Deliver accessories where designated at site by Contractor.

**PART 2 - PRODUCTS**

**.1 Products**

.1 Specified manufacturer's catalogue references to Bobrick Washroom Equipment establish minimum acceptable standards for products specified in this section except where another manufacturer is specifically listed.

.2 Unspecified materials which form a part of complete assemblies shall be of manufacturer's standard.

**.3 Toilet Tissue Dispenser**

Location: At each new water closet as noted in drawings.  
Mounting: Surface  
Operation: Dual roll with theft resistant spindle  
Finish: satin finish on cast aluminum  
Model: B-274



.4 **Mirrors**

Location: As indicated on drawings.  
Size: 610 x 1000.  
Frame: 19 mm wide, Type 304 stainless steel, satin finish.  
Glass: 6 mm thick Tempered and plate/float glass, electronically plated.  
Model: B-290 1830

.5 **Soap Dispensers**

Location: As indicated on drawings.  
Mounting: surface  
Finish: Stainless Steel, satin finish  
Model: B-2111

.6 **Soap Dishes**

Location: In room 103B  
Mounting: Semi-recessed  
Finish: Stainless Steel, satin finish.  
Model: B-7680

.7 **Paper Towel Dispensers**

Location: As indicated on drawings.  
Mounting: surface  
Finish: Stainless Steel, satin finish  
Model: B-262

.8 **Towel/Robe Hooks**

Location: In room 103B  
Mounting: surface  
Materials: Type 304 stainless steel for flanges, concealed wall plates, mounting brackets, post and cap complete with lock screws.  
Finish: satin finish  
Model: B-76727

.9 **Grab Bars**

Type 1

Location: As indicated on drawings.  
Mounting: surface with exposed flanges, for horizontal and vertical installation  
Material: 18 gauge, type 304 stainless steel, 32 mm diameter  
Finish: polished ends with peened grips  
Model: B-5806 x 610 mm

Type 2

Location: As indicated on drawings.

---

Mounting:	surface with exposed flanges
Material:	18 gauge, type 304 stainless steel, 32 mm diameter
Finish:	polished ends with peened grips
Model:	B-494 or B495. 760mm X 760mm

**.2     Fabrication**

- .1     Include reinforcing, anchorage and mounting devices required for the installation of each product.
- .2     Fit joints and junctions between components tightly and in true planes, conceal and weld joints where possible.
- .3     Fabricate products with materials and component sizes, metal gauges, hardware, reinforcing, anchors, and fastenings of adequate strength to ensure that products will remain free of warping, buckling, opening of joints and seams, and distortion within limits of intended use.

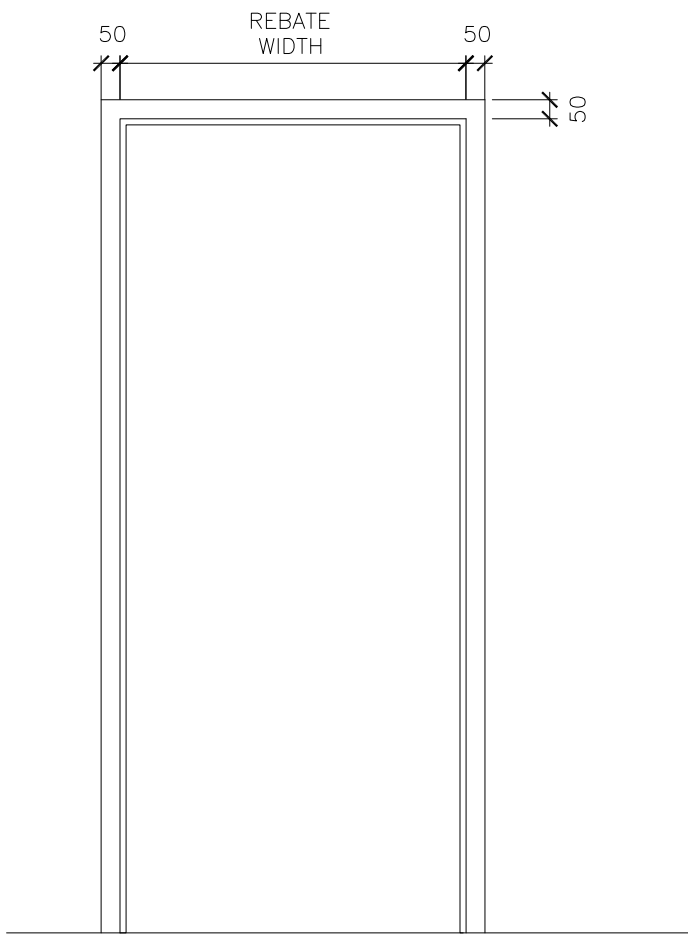
**.3     Installation**

- .1     Provide manufacturer's handling instructions, anchorage information, roughing-in dimensions, and templates for installation of products specified in this Section.
- .2     Install products only as specified by manufacturer..3     Install grab bars in accordance with OBC.
- .4     Verify location and mounting heights of products with Architect before roughing-in or installation.
- .5     Install products plumb, level, straight, tight and secure to mounting surfaces, and centred between joints on masonry and tile walls.
- .6     Attach accessories to walls with only
  - : 38 mm long expansion shields in solid masonry or in concrete.
  - : toggle bolts in cells of hollow masonry units.
  - : sheet metal screws into metal framing and finish of fastened products where exposed to view.
  - : the attachment of toilet tissue dispensers shown back-to-back shall be bolted through metal partition.

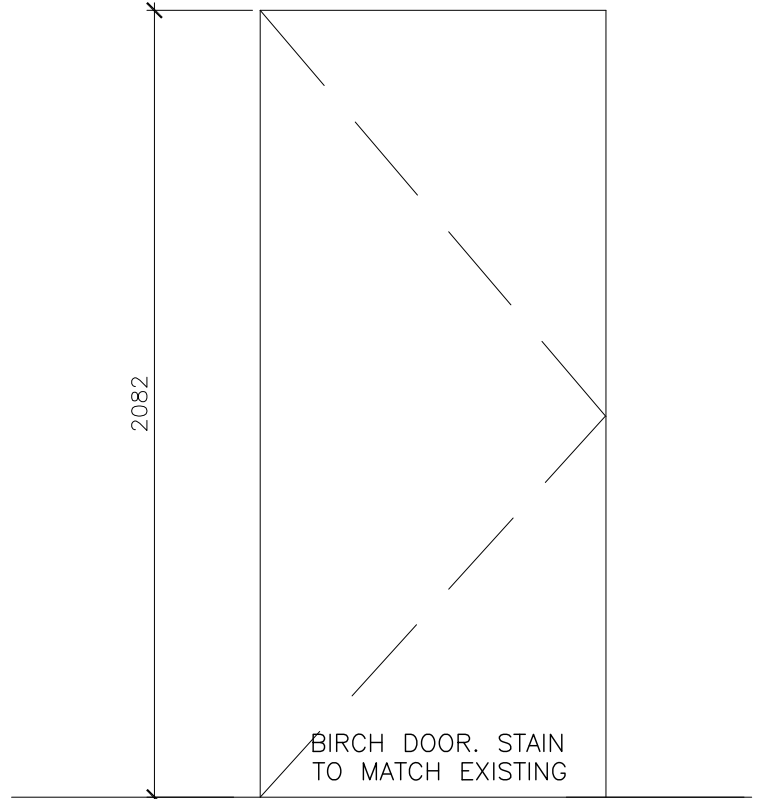
**.4     Adjustment and Cleaning**

- .1     Adjust operating units to ensure free-acting, tightly closing, and properly functioning operation. Lubricate as required.
- .2     Refinish damaged or defective products so that no variation in surface appearance is discernible. Refinish products at site only if approved.

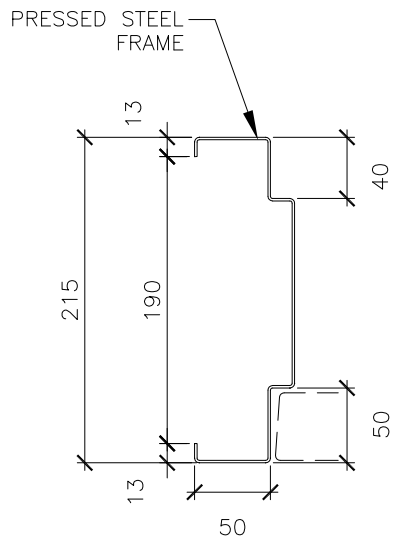
**End of Section**



FRAME TYPE A



DOOR TYPE A



FRAME PROFILE 1

1 DOOR DETAILS

**RANDY WILSON ARCHITECT INCORPORATED**  
  
 280 QUEENS AVENUE, SUITE 10  
 LONDON, ONTARIO N6B1X3  
 T: 519.439.0611  
 F: 519.438.3942  
 e: randy@rwoarchitect.ca  
 www.rwoarchitect.ca

PROJECT TITLE:  
**EXTERIOR & INTERIOR RENOVATION  
 ST. JOHN FISHER**

DRAWING TITLE:  
**DOOR DETAILS**

SCALE: **AS SHOWN**      DRAWN: **SD**      CHECKED: **SD**

DATE: **MAY 19, 2015**      PROJECT No: **1505**

**SKT-001**

**DOOR SCHEDULE**

**St. Clair Catholic District School Board  
 Srt John Fisher Catholic School Exterior & Interior Renovations  
 Randy Wilson Architect Incorporated**

**RWAI # 1505**

**2013.05.19**

**Abbreviations**

Refer to Floor Plans for Door Swings

<b>ALUM</b> Aluminum	<b>GL</b> Glass	<b>PT</b> Paint	<b>EX</b> Existing
<b>HM</b> Hollow Metal	<b>TEMP</b> 6mm Tempered	<b>STN</b> Stain	<b>PL</b> Lead Lined
<b>SS</b> Stainless Steel	<b>PGW</b> Polished Georgian Wired	<b>ANOD</b> Clear Anodized	- None
<b>WD</b> Wood	<b>PHEN</b> Phenolic	<b>N/A</b> Not Applicable	

Door No.	Room Number From	Room Number To	Rebate		Door					Frame					Rating	Hardware Groups	Remarks
			Width	Height	Type	Material	Finish	Glass	Grille	Type	Material	Finish	Profile	Glass			
D-150A	CR-1-3	H.C 150A	940	2082	A	WD	CLEAR	NO	NO	A	HM	PT	A	NO			

**1 DOOR SCHEDULE**  
**SCALE = N.T.S**

PROJECT TITLE: <b>EXTERIOR &amp; INTERIOR RENOVATION ST. JOHN FISHER</b>		DRAWING TITLE: <b>DOOR SCHEDULE</b>	
SCALE: AS SHOWN	DRAWN: SD	CHECKED: SD	
DATE: MAY 19, 2015	PROJECT No: 1505		SKT-002